

Peppermint Swirl



Finished size: 57½" x 57½"

*Introducing
Andover Fabrics new collection:*

Peppermint Party

Fabrics by Lonni Rossi

Quilt designed and made by Jo Ann Lapore
and machine quilted by Lisa Kaupp



makower uk®

1384 Broadway • New York, NY 10018 • (800) 223-5678
www.andoverfabrics.com

Peppermint Swirl

*Introducing Andover Fabrics new collection: Peppermint Party by Lonni Rossi
Quilt designed and made by Jo Ann Lapore and machine quilted by Lisa Kaupp*

Quilt finishes 57½" x 57½"

Welcome

What a happy and dynamic quilt! Lonni's fabulous fabrics bring a bright burst of color to any project. The colors and motifs in many of the fabrics change from one part of the fabric to another. This has the result of giving more color/texture options in one piece of fabric. Notice how Jo Ann made use of this when designing the quilt.

At the end of the Fabric Requirements section, there are Block Cutting Instructions. All of the squares, strips, and swirls for the blocks are cut from the fabric remaining after all of the 6⅞" squares for the large triangle squares are cut.

Note: When piecing the large triangle squares in Step 3, you will have one large triangle square of each color combination left over.

Fabric Requirements and Cutting Directions

- 3374-MLE** ½ yard **Pink Ginkgo Print (piecing)**
Cut (5) 6⅞" squares
- 3572-MP** 1⅜ yards **Purple/Pink Dappled Print (piecing, outer border)**
Cut (5) 6⅞" squares
Cut (4) 6½" x 45½" strips, pieced from 5 width of fabric strips
- 3572-MY** ½ yard **Orange/Yellow Dappled Print (piecing)**
Cut (5) 6⅞" squares
- 3546-MR** ½ yard **Orange/Metallic Pink Etching Print (piecing)**
Cut (5) 6⅞" squares
- 3544-MR** ⅞ yard **Pink-on-Pink Metallic Lace Print (piecing, inner border)**
Cut (5) 6⅞" squares
Cut (2) 2" x 42½" strips on widthwise grain
Cut (2) 2" x 45½" strips, pieced from 3 width of fabric strips
- 3539-MRD** ½ yard **Red Crackle Print (piecing)**
Cut (5) 6⅞" squares
- 3547-E** ½ yard **Cream/Pink Texture (piecing)**
Cut (5) 6⅞" squares
- 3539-P** ½ yard **Purple Crackle Print (piecing)**
Cut (5) 6⅞" squares
- 3540-MP** ¼ yard **Purple/Metallic Lavender Rubbing Print (blocks)**
See Block Cutting Instructions, page 3
- *3548-E** ¼ yard **Pink/Aqua Knotted Stripe (blocks)**
See Block Cutting Instructions, page 3
- Also needed:** 1¼ yards **Paper-Backed Fusible Web.**
- *Additional fabric required for backing and binding.*
- 3548-E** 3⅞ yards **Pink/Aqua Knotted Stripe (backing)**
Cut and piece to fit quilt top with 4" overlap on all sides.
- 3548-E** ⅝ yard **Pink/Aqua Knotted Stripe (binding)**
Cut (7) 2½" x width of fabric strips

Peppermint Swirl

Block Cutting Instructions

1. Cut all block squares, strips, and squares for swirls from the fabric remaining after all of the $6\frac{7}{8}$ " squares for the triangle squares are cut. Also used for the block cutting are the last two fabrics listed: the Purple/Metallic Lavender Rubbing Print, the Pink/Aqua Knotted Stripe, along with the Paper-Backed Fusible Web. Notice that the Knotted Stripe is used more extensively in the blocks than the other fabrics. Each block in the quilt uses at least 5 different fabrics. Cut fabric for 17 blocks total.

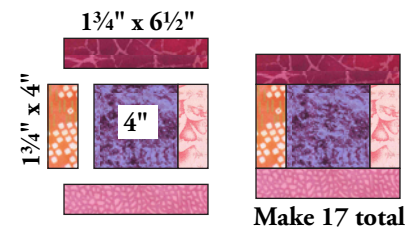
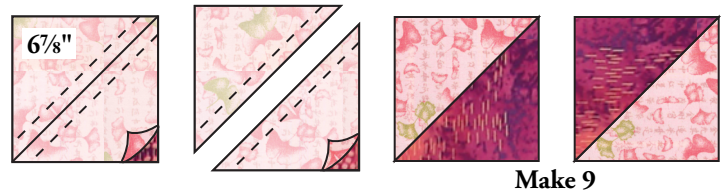


Diagram A

For each block you will need to cut a total of:

- (1) 5" square (this will become the swirl)
- (1) 4" square for block center
- (2) $1\frac{3}{4}$ " x 4" strips
- (2) $1\frac{3}{4}$ " x $6\frac{1}{2}$ " strips
- (1) 5" square of paper-backed fusible web



Piecing the Blocks

2. Referring to Diagram A, sew two $1\frac{3}{4}$ " x 4" strips to sides of 4" square. Stitch two $1\frac{3}{4}$ " x $6\frac{1}{2}$ " strips to top and bottom to make Framed Square Block. Make 17 total.

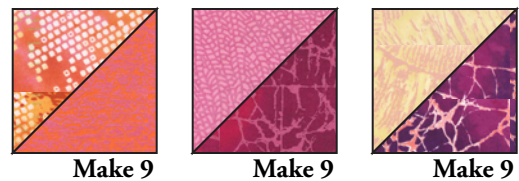
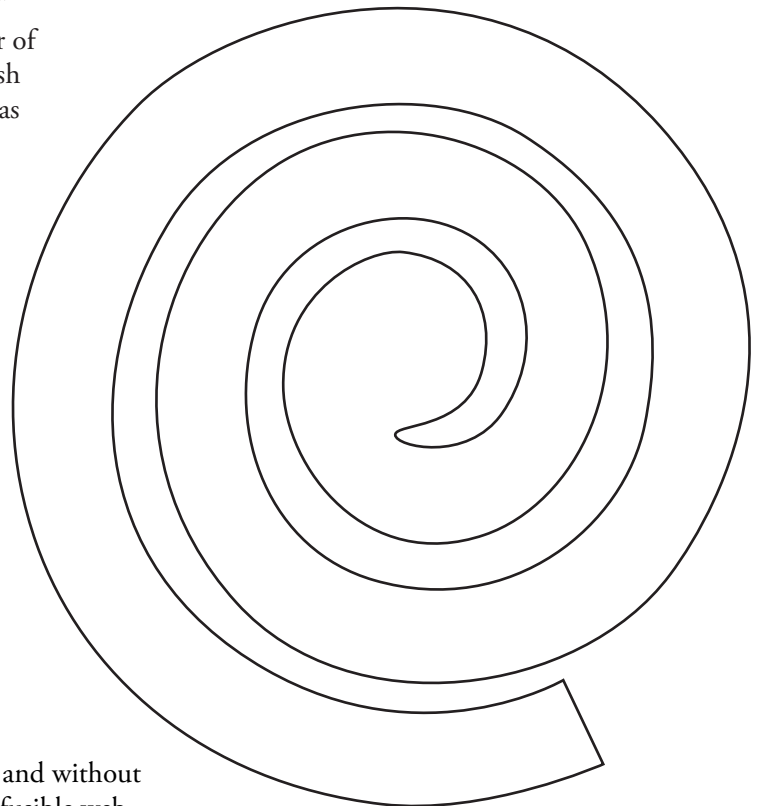


Diagram B

3. Center and trace Template A onto paper side of paper-backed fusible web 5" square. Following manufacturer's instructions, fuse traced fusible web square to wrong side of assorted 5" fabric squares. Cut out swirls and fuse into place in center of block, following manufacturer's instructions. You may wish to fuse some or all of your swirls in place after quilt top has been completed.

Piecing the Triangle Squares

4. Referring to Diagram B, draw a diagonal line on wrong side of Pink Ginkgo Print $6\frac{7}{8}$ " square. Place marked square on Purple/Pink Dappled Print $6\frac{7}{8}$ " square, right sides together, aligning raw edges. Sew $\frac{1}{4}$ " seam on each side of marked line; cut apart on line. Press open to make large triangle squares. Make 9 large triangle squares of each fabric combination shown. You will have one large triangle square of each fabric combination left over.



Template is printed reversed and without seam allowance for use with fusible web.

Template A

Peppermint Swirl

Assembling the Quilt Top

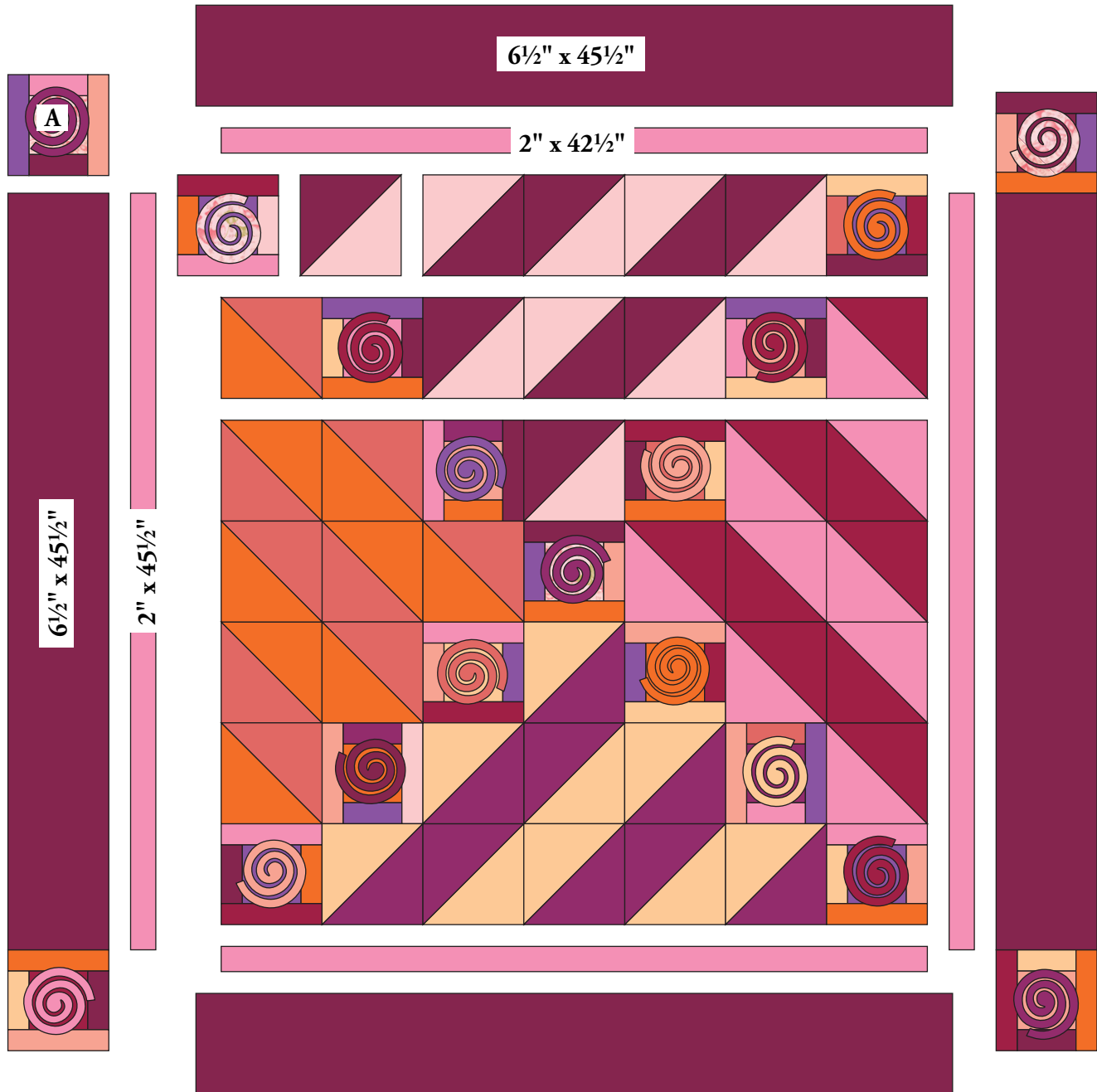
Note: Refer closely to Quilt Diagram and photo for following steps. You may wish to arrange blocks and triangle squares on design wall or other large flat surface prior to assembly.

- Carefully watching orientation and placement of blocks and triangle squares, sew 7 rows of 7 blocks/triangle squares each. Stitch rows together to form quilt center.
- Stitch Pink-on-Pink Metallic Lace $42\frac{1}{2}$ " strips to top and bottom. Sew Pink-on-Pink Metallic Lace $45\frac{1}{2}$ " strips to sides.

- Sew Purple/Pink Dappled Print $45\frac{1}{2}$ " strips to top and bottom. Sew blocks to ends of remaining $45\frac{1}{2}$ " strips and stitch to sides. Fuse any remaining swirls to quilt top.

Finishing the Quilt

- Layer quilt with batting and Pink/Aqua Knotted Stripe backing. Quilt as desired. Bind with Pink/Aqua Knotted Stripe to finish the quilt.



Quilt Diagram

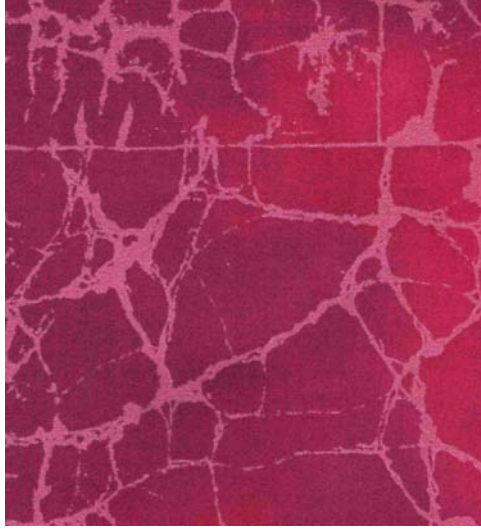
1384 Broadway
New York, NY 10018
(800) 223-5678
www.andoverfabrics.com

Peppermint Party

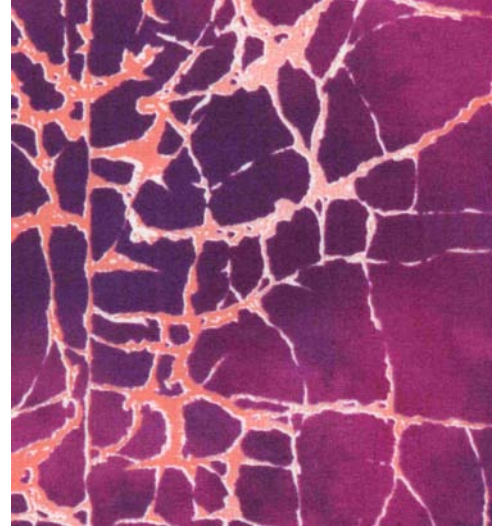
by Lonni Rossi



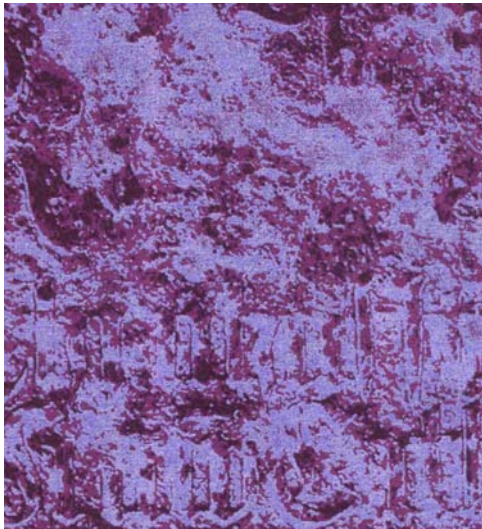
3374-MLE



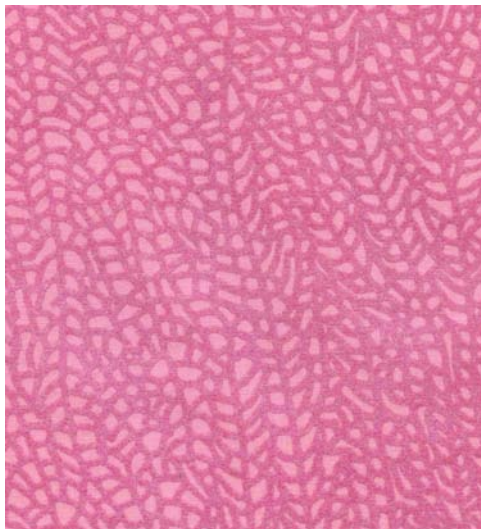
3539-MRD



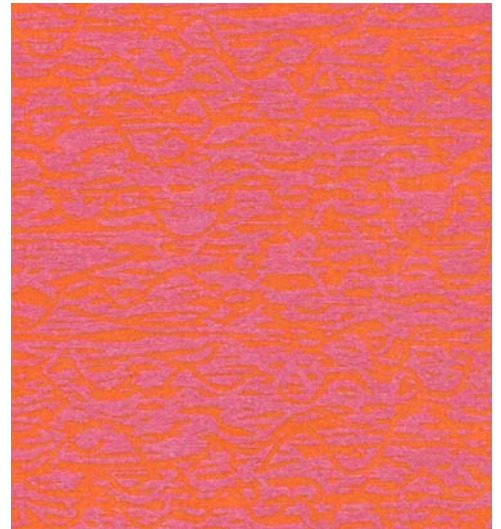
3539-P



3540-MP



3544-MR



3546-MY



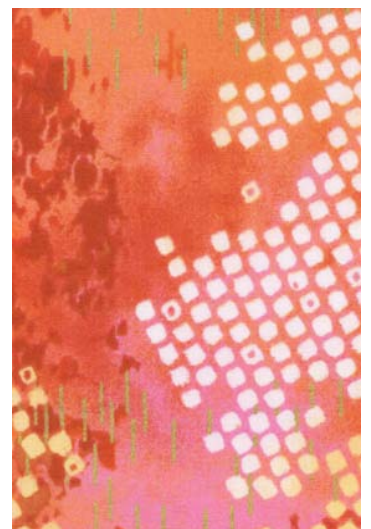
3547-E



3548-E



3572-MP



3572-MY

All fabrics used in quilt pattern. Fabrics shown are 50% of actual size.

Free Pattern Download Available at www.andoverfabrics.com