

Handmade

makower uk
The Henley Studio

BY THE HENLEY STUDIO FOR MAKOWER UK



Sew Special Quilt
designed by:
Janet Houts

Quilt Size: 70" x 94"
andoverfabrics.com



andover



makower uk
The Henley Studio

Free Pattern Download Available

1384 Broadway New York, NY 10018
Tel. (800) 223-5678 • andoverfabrics.com

Sew Special Quilt

Introducing Andover Fabrics new collection: **Handmade** by the Henley Studio for Makower UK
Quilt designed by Janet Houts



Quilt finishes 70" x 94"
30 Spool Blocks: 8" x 8"
10 Big Blocks: 16" x 16"

Tradition with a twist! The charming sewing-related fabrics are stitched into blocks like those quilters made a century ago, and then the blocks are joined together in an unusual setting. The little blue squares form stair steps to add movement to the overall design.

Cutting Directions

Note: Read assembly directions before cutting patches. All measurements are cut sizes and include 1/4" seam allowances. Borders are cut the exact lengths required plus 1/4" seam allowances. WOF designates the width of fabric from selvedge to selvedge (approximately 42" wide).

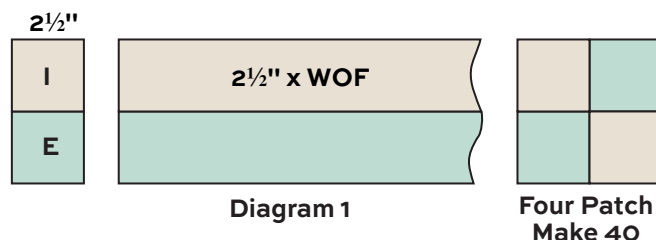
- Fabric A** Cut (2) borders 6 1/2" x 82 1/2", cut lengthwise
Cut (2) borders 6 1/2" x 70 1/2", cut lengthwise
Cut (10) squares 4 1/2"
- Fabric B** Cut (20) rectangles 4 1/2" x 8 1/2"
- Fabric C** Cut (20) squares 4 1/2"
Cut (20) rectangles 2 1/2" x 8 1/2"
Cut (40) rectangles 2 1/2" x 4 1/2"
Cut (40) squares 2 1/2"
- Fabric D** Cut (7) strips 1 1/2" x WOF, pieced to make the following:
(2) borders 1 1/2" x 80 1/2"
(2) borders 1 1/2" x 58 1/2"
Cut (80) squares 2 1/2"
- Fabric E** Cut (5) strips 2 1/2" x WOF for four-patches
- Fabric F** Cut (60) rectangles 2 1/2" x 4 1/2"
Cut (60) squares 3" (read Step 5 before cutting)
- Fabric G** Cut (9) strips 2 1/2" x WOF for binding
Cut (15) squares 4 1/2"
- Fabric H** Cut (15) squares 4 1/2"
- Fabric I** Cut (5) strips 2 1/2" x WOF for four-patches
Cut (60) rectangles 2 1/2" x 4 1/2"
Cut (60) squares 3" (read Step 5 before cutting)
- Backing** Cut (2) panels 40" x 102", pieced to fit quilt top with overlap on all sides

Fabric Requirements

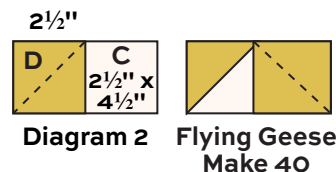
		Yardage	Fabric
Fabric A	border	2 1/2 yards	1888-Q
Fabric B	blocks	1 yard	1889-P
*Fabric C	blocks	1 1/2 yards	1890-Q
Fabric D	border, blocks	3/4 yard	1890-Y
Fabric E	blocks	1/2 yard	1891-B
Fabric F	blocks	1 1/4 yards	1891-S
Fabric G	binding, blocks	1 yard	1892-B8
Fabric H	blocks	3/8 yard	1892-S
Fabric I	blocks	1 1/4 yards	1525-Q
*Backing		5 3/4 yards	1890-Q

Making the Quilt

- Referring to Diagram 1, join a Fabric E strip and a Fabric I strip to make a band. Press the seam allowance toward Fabric E. Cut 16 segments each 2 1/2" wide from the band. Repeat with remaining E and I strips. Cut a total of 80 segments. Join 2 segments as shown to make a four-patch unit. Make a total of 40. Set aside.

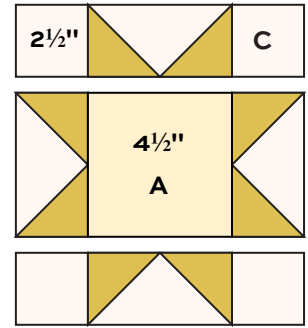


- Draw a diagonal line on the wrong side of each Fabric D 2 1/2" square. Place a marked square on one end of a Fabric C 2 1/2" x 4 1/2" rectangle, right sides together (Diagram 2). Sew on the marked line; trim away and discard excess fabric. Press open. Repeat this process on the opposite end of the rectangle to make a flying geese unit. Make 40 total. Set aside.

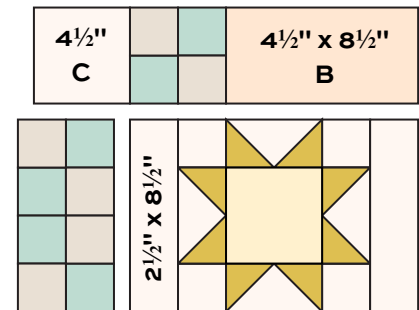


Sew Special Quilt

- Referring to the star diagram, sew a flying geese unit to opposite sides of a Fabric A $4\frac{1}{2}$ " square. Sew Fabric C $2\frac{1}{2}$ " squares to ends of a flying geese unit. Sew to the top of the star, rotating the flying geese as shown. Repeat for the bottom. Make 10 stars.
- The big block is made with 4 four-patch units, 1 star, 2 Fabric C $4\frac{1}{2}$ " squares, 2 Fabric C $2\frac{1}{2}$ " x $8\frac{1}{2}$ " rectangles, and 2 Fabric B $4\frac{1}{2}$ " x $8\frac{1}{2}$ " rectangles. Referring to the diagram, join the parts into pieced units, and then join the units into 3 horizontal rows as shown. Join the rows to make a big block. Make 10.
- The spool blocks are made with half-square triangles (HST) that finish 2" square. Use your favorite method to make HST, or follow these directions. Draw a diagonal line on the wrong side of each Fabric I 3" square (Diagram 3). Place a marked square on a Fabric F square, right sides together. Sew $\frac{1}{4}$ " seam on each side of the marked line; cut apart on the marked line. Press open to make pieced HST. Trim the squares to $2\frac{1}{2}$ " if needed. Make 120 total HST.
- Refer to the spool block diagrams. Sew Fabric I rectangles to opposite sides of Fabric G and Fabric H $4\frac{1}{2}$ " squares. Sew HST to ends of each Fabric F rectangle. Sew these units to the top and bottom of the block, rotating the patches as needed to make the spool design. Make 15 pink spool blocks and 15 gray spool blocks.
- Referring to the Quilt Diagram, join 5 pink spool blocks and 5 gray spool blocks in a vertical row, paying close attention to the orientation and placement of the blocks. Repeat to make 3 rows like this. Join 5 big blocks in a vertical row, rotating the blocks to duplicate the design shown. Repeat to make a second row. Join the rows in the order shown.
- Sew longer Fabric D borders to the sides, and then sew shorter Fabric D borders to the top and bottom. Repeat with the Fabric A borders.



Star – Make 10



Big Block – Make 10

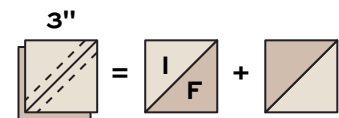
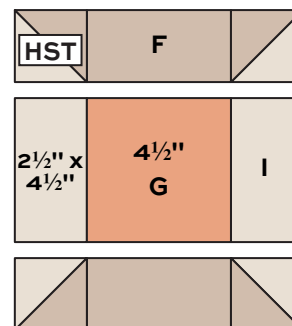


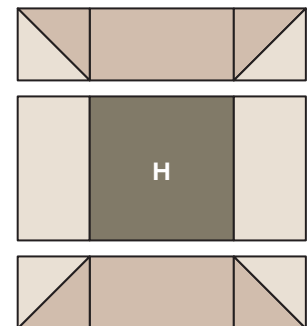
Diagram 3
HST – Make 120

Finishing the Quilt

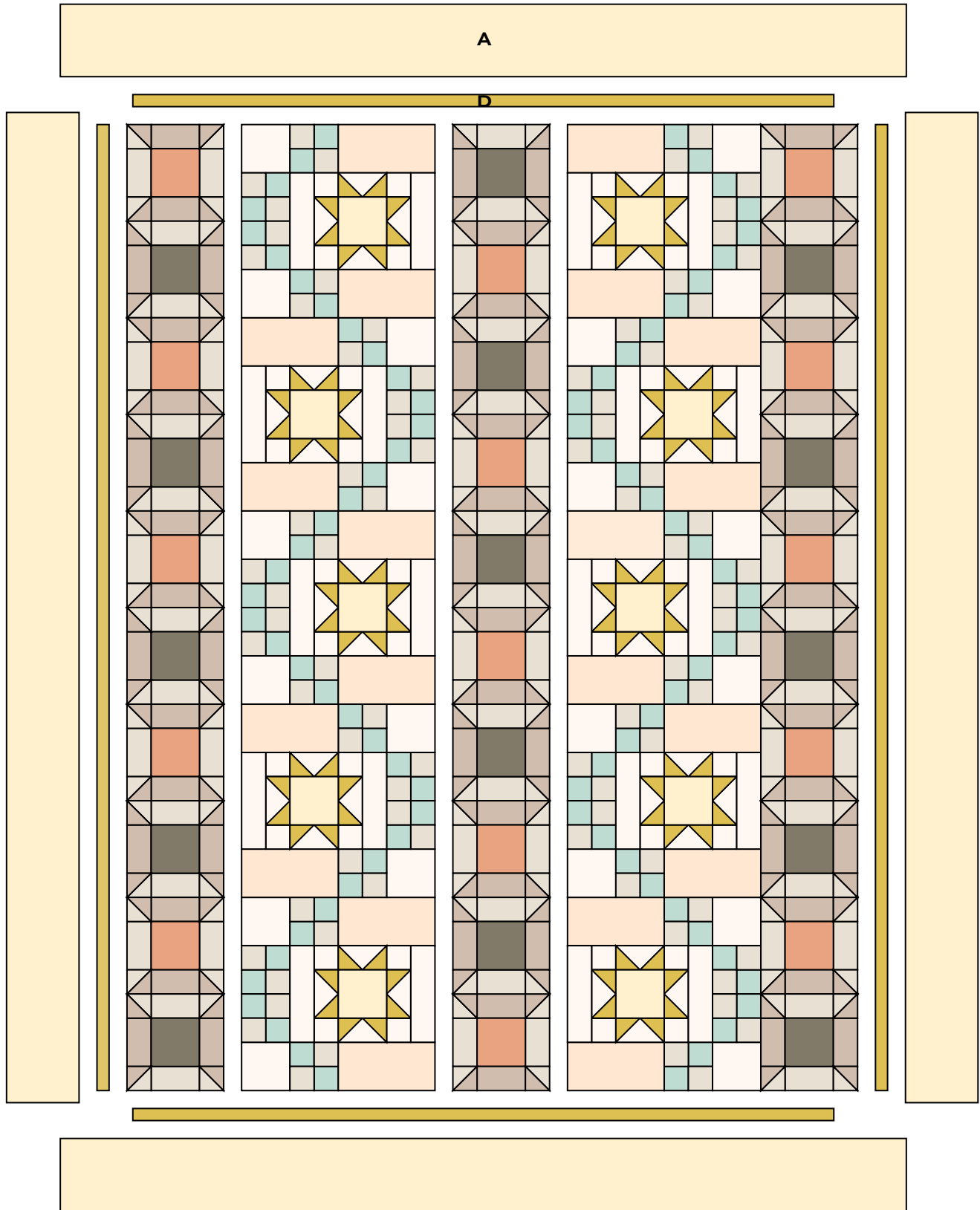
- Layer the quilt with batting and backing and baste. Quilt in the ditch around borders and block patches. Quilt the outer border as desired. Bind to finish the quilt.



Pink Spool – Make 15



Gray Spool – Make 15



Quilt Diagram

Handmade

makower uk
The Henley Studio

BY THE HENLEY STUDIO FOR MAKOWER UK



1888-B



1888-Q*



1890-Q*



1890-Y*



1889-B



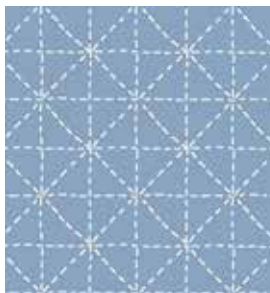
1889-P*



1891-B*



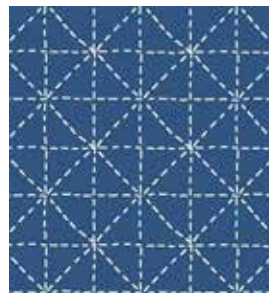
1891-S*



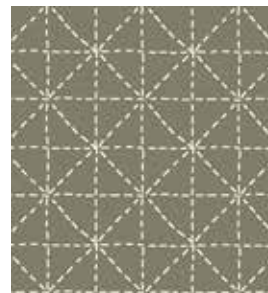
1892-B3



1892-B8*



1892-P



1892-S*



1525-Q*

*Indicates fabrics used in quilt pattern. Fabrics shown are 50% of actual size.

andover

•
• makower uk
• *The Henley Studio*

Free Pattern Download Available

1384 Broadway New York, NY 10018
Tel. (800) 223-5678 • andoverfabrics.com

7/15/17