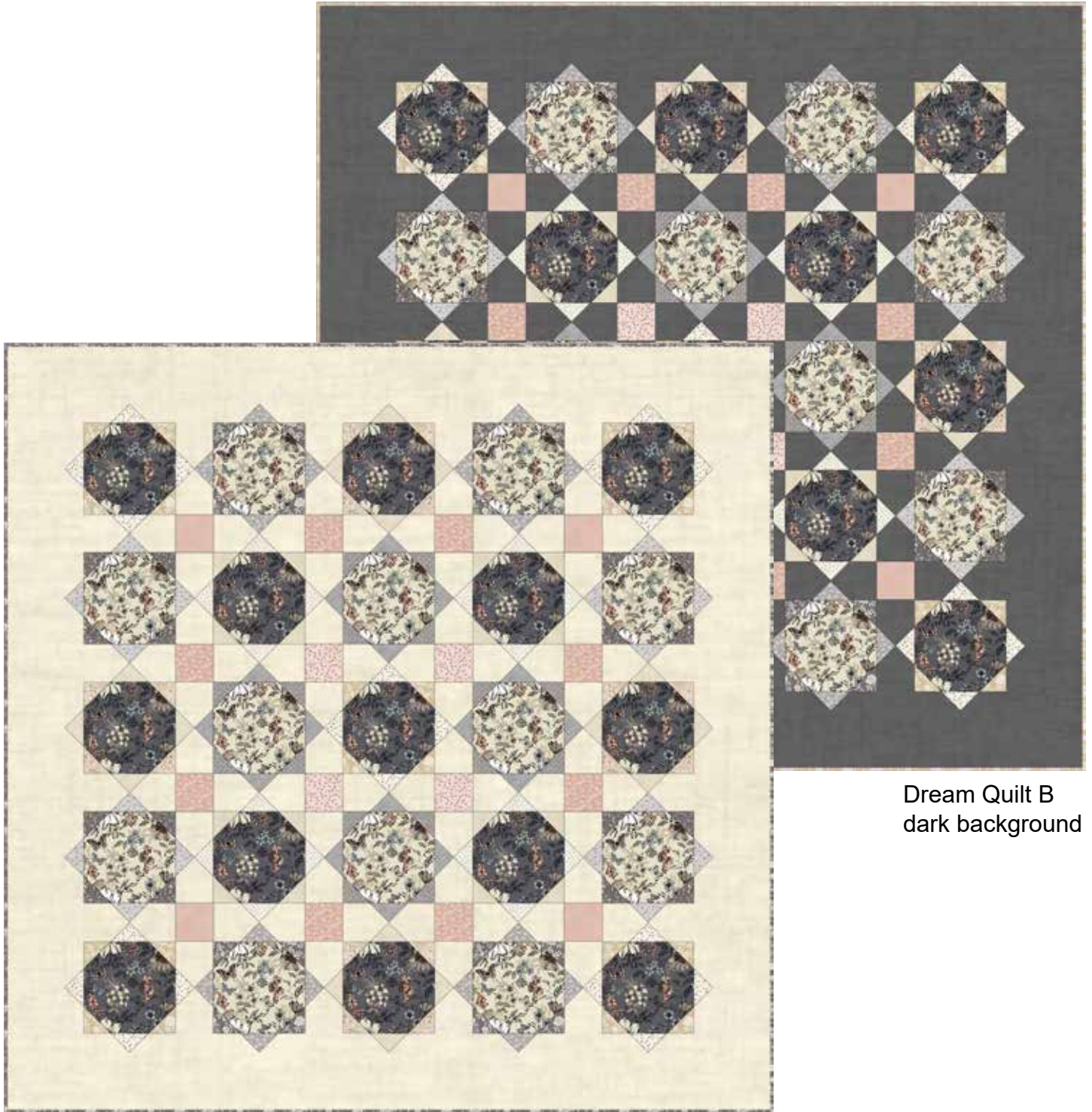


Dream

Finished size 60" x 60" (1.5 m x 1.5m)

Designed by Lynne Goldsworthy of lilysquilts.blogspot.com
using the Dream collection from Makower UK www.makoweruk.com



Dream Quilt A light background

Dream Quilt B
dark background

Dream

Finished size 60" x 60" (1.5 m x 1.5m)

Designed by Lynne Goldsworthy of lilysquilts.blogspot.com

using the Dream collection from Makower UK www.makoweruk.com

Fabric Requirements

SKU	Description	Yardage	Cut
1862 Q	Exotic Flower	75cms / ¾ yd	Twelve 8 ¼" squares
1862 S	Exotic Flower	75cms / ¾ yd	Thirteen 8 ¼" squares
1862 S	Exotic Flower (backing both quilts)	3.5 m / 3 ¾ yds	Two equal lengths
1868 Q	Flower Trail	F8th	Ten 3 ½" squares cut in half on the diagonal
1868 Q (Quilt A) 1868 S (Quilt B)	Flower Trail (Binding*)	50cms / ½ yd	Six 2 ½" WOF strips
1868 S	Flower Trail	F8th	Eight 3 ½" squares cut in half on the diagonal
2007 Q	Floral Scroll	F8th	Eight 3 ½" squares cut in half on the diagonal
2007 S	Floral Scroll	F8th	Eight 3 ½" squares cut in half on the diagonal
2008 P	Meadow	F8th	Eight 3 ½" squares
2008 S	Meadow	F8th	Eight 3 ½" squares cut in half on the diagonal
2009 P	Blossom	F8th	Four 3 ½" squares
2009 Q	Blossom	F8th	Ten 3 ½" squares cut in half on the diagonal
2009 S	Blossom	F8th	Eight 3 ½" squares cut in half on the diagonal
2010 S	Vine	F8th	Eight 3 ½" squares cut in half on the diagonal
2011 P	Foulard	F8th	Four 3 ½" squares
2011 Q	Foulard	F8th	Eight 3 ½" squares cut in half on the diagonal
2013 Q	Daisy	F8th	Eight 3 ½" squares cut in half on the diagonal
2013 S	Daisy	F8th	Eight 3 ½" squares cut in half on the diagonal
2014 S	Mini Leaf	F8th	Eight 3 ½" squares cut in half on the diagonal
1473 Q (Quilt A) 1473 S8 (Quilt B)	Linen Texture (background "BKG")*	2.25 m 2 ½ yds	Twenty 2 ½" WOF strips cut into one hundred 2 ½" x 8" rectangles and four 2" squares Two 2" WOF strips cut into sixteen 2" x 3 ½" strips. Six 5" WOF strips sewn end to end and cut into two 51 ½" and two 60 ½" lengths
Wadding	279 Cotton Mix 80-20 from http://www.vlieseline.com/en		
Threads	Aurifil 50wt for piecing and 40wt for quilting from http://www.aurifil.com		
Templates	Twenty-five A templates, Twenty-five B template sheets, One C template		

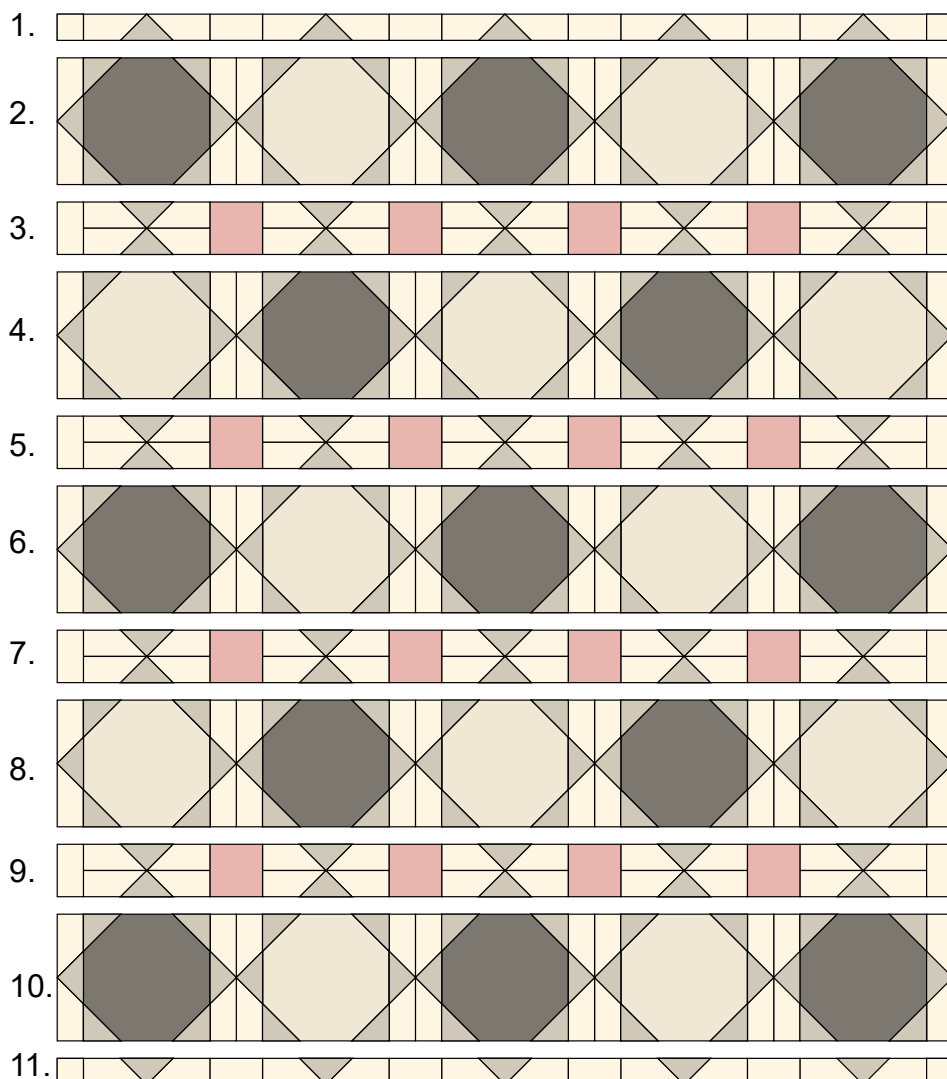
*pick one binding and one background depending on whether you are making the dark or the light version

Notes:

- Read the pattern in full before starting.
- ¼" seams are used throughout except where stated otherwise.
- Press after each seam, pressing seams open or to one side as preferred.
- WOF - width of fabric - a strip of fabric cut from selvedge to selvedge.
- This pattern uses foundation paper piecing. If you are not familiar with this technique, we suggest practicing on scraps first and the following online tutorial is a useful guide:
<http://www.lovepatchworkandquilting.com/blog/foundation-paper-piece>
- Make sure to visit <http://www.makoweruk.com/projects/> to ensure you are working from the most up-to-date version of the pattern.

Making the quilt top

1. Cut the fabrics as shown in the fabric requirements table.
2. Foundation paper piece twenty-five A templates using the 8 ¼" squares for section 1 and the 3 ½" half square triangles for sections 2 to 5. Follow the fabric placement in the main quilt image.
3. Cut the linen texture 2 ½" x 8" strips in half along a diagonal line using the C templates as guides. Cut fifty of them in half using the C1 template and fifty using the C2 template.
4. Foundation paper piece one hundred B templates using the 3 ½" half square triangles for section 1, the C1 template pieces for section 2 and the C2 template pieces for section 3 on the templates. Follow the fabric placement in the main quilt image.
5. Sew the quilt top centre into eleven rows as set out below and as shown in fig 1 and following the fabric placement in the main quilt image:



- Rows 1 and 11 contain two 2" BKG squares, five B template pieces and four 2" x 3 ½" BKG rectangles.

- Rows 2, 4, 6, 8 and 10 contain ten B template pieces and five A template pieces.

- To make rows 3, 5, 7, and 9, first sew ten B template pieces into pairs then sew those pairs into rows containing two 2" x 3 ½" BKG rectangles, five pairs of B template pieces and four pink 3 ½" squares.

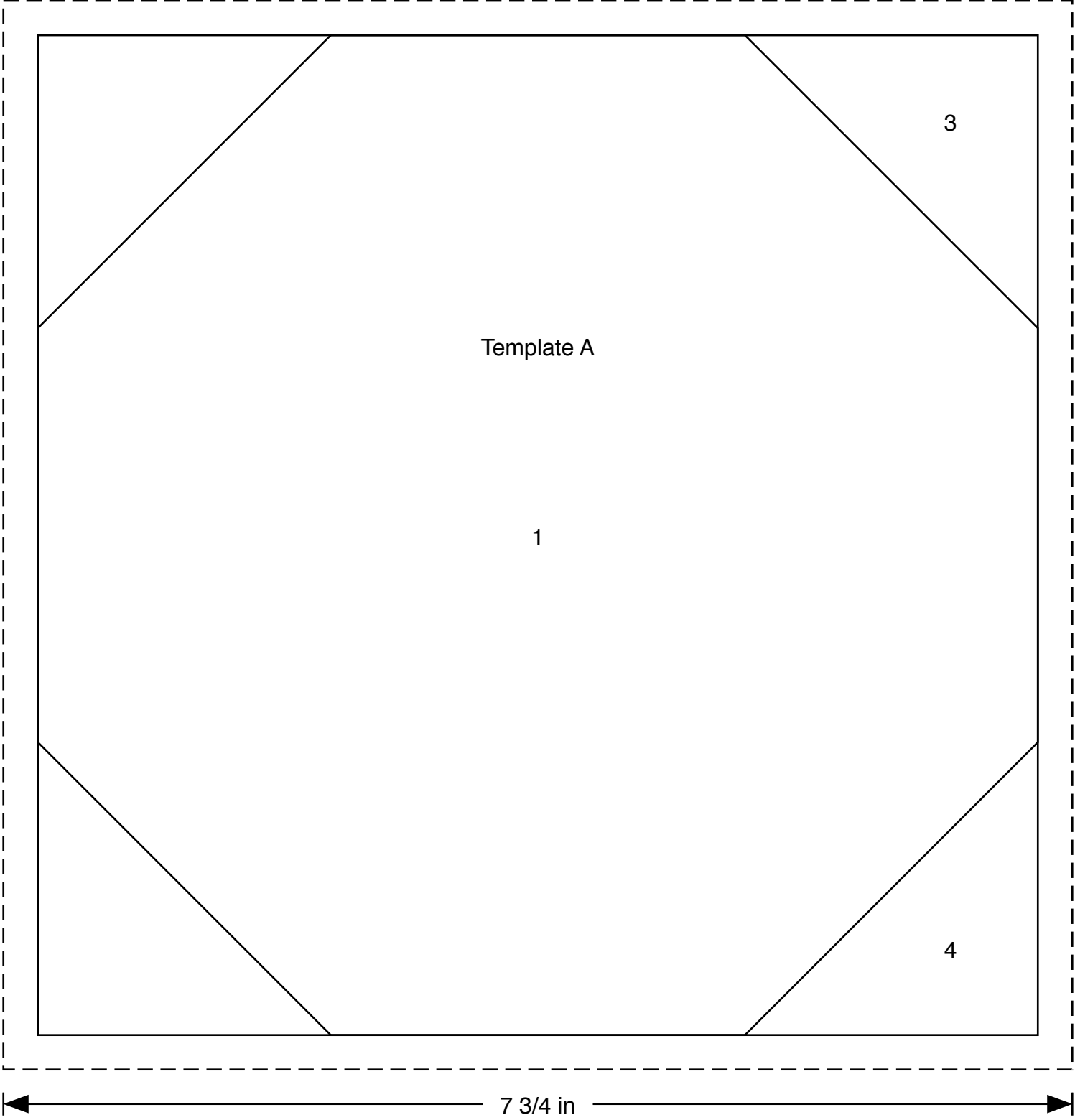
6. Sew the eleven rows of the quilt together to finish the quilt top centre.

7. Sash the sides of the quilt with the 51 ½" strips of background fabric and then the top and bottom with the 60 ½" strips.

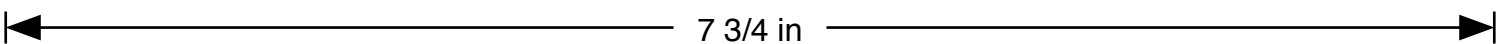
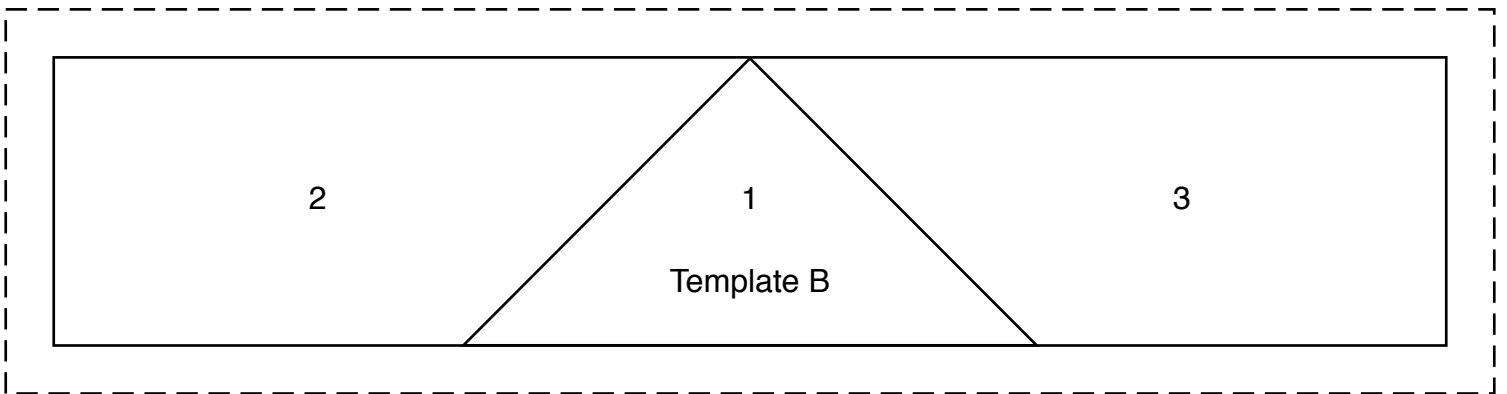
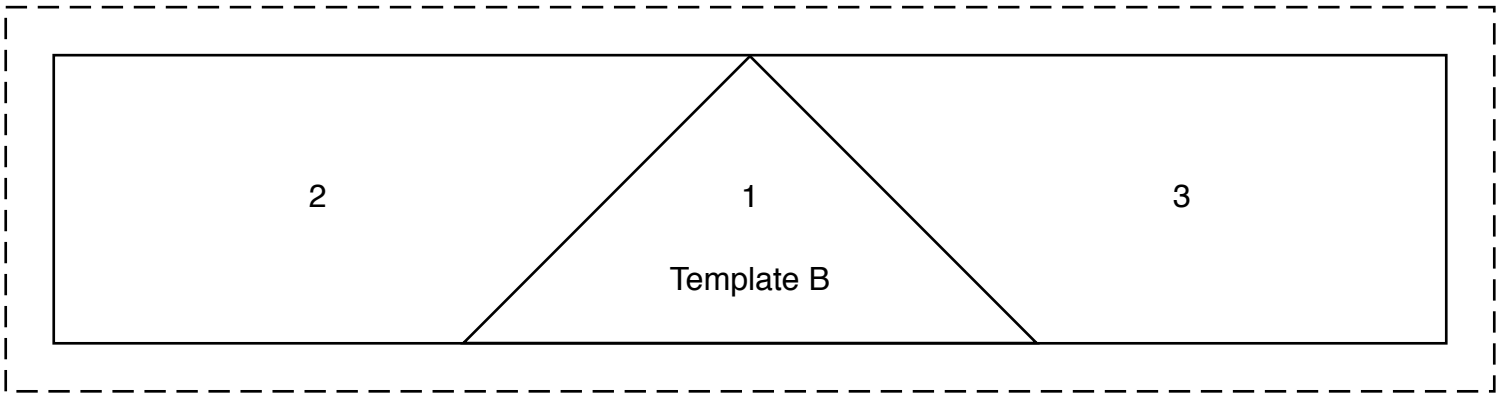
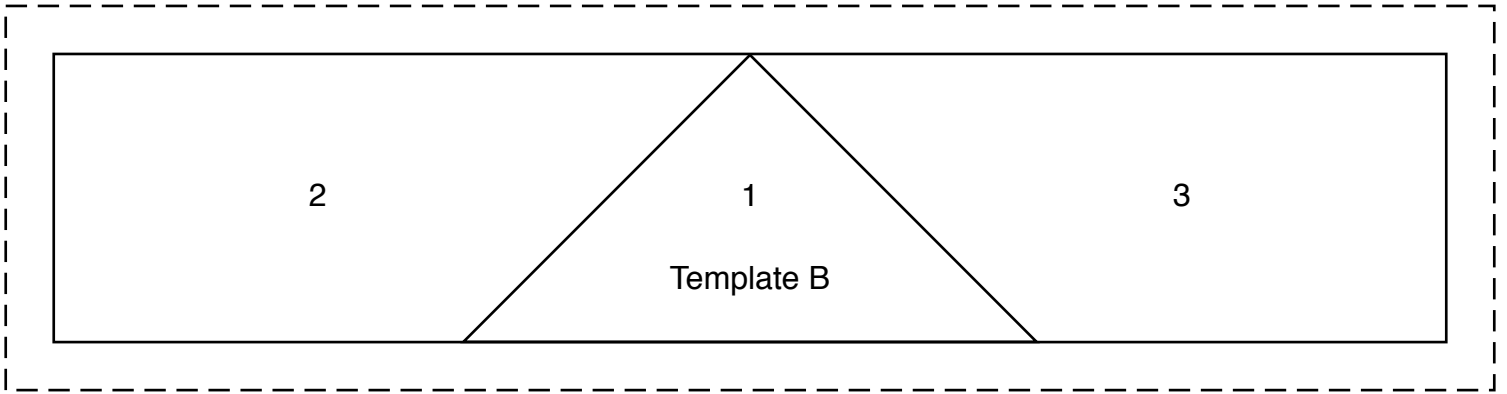
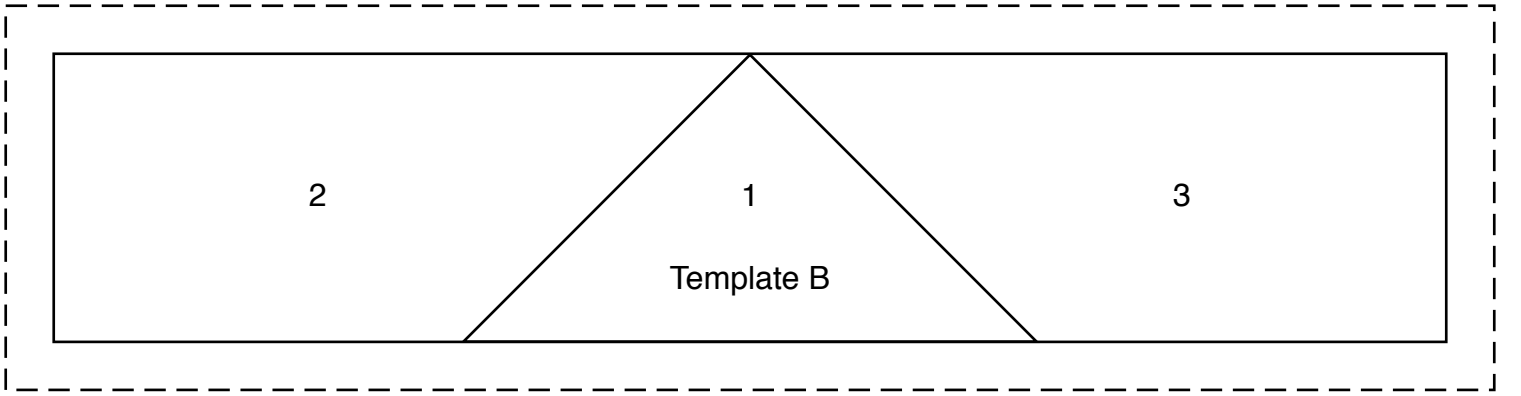
Finishing the quilt

1. Sew the binding strips end to end using diagonal or straight seams as preferred and press wrong sides together along the length to make a double fold binding.
2. Make a quilt sandwich, basting together the quilt back, the wadding and the quilt top.
3. Quilt as desired then trim the quilt square, removing excess wadding and backing. We quilted a diagonal cross hatch of lines approximately 1 ¾" apart using a cream 40wt Aurifil thread on the front and back.
4. Bind the quilt taking care to mitre the corners.

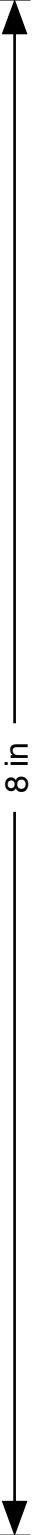
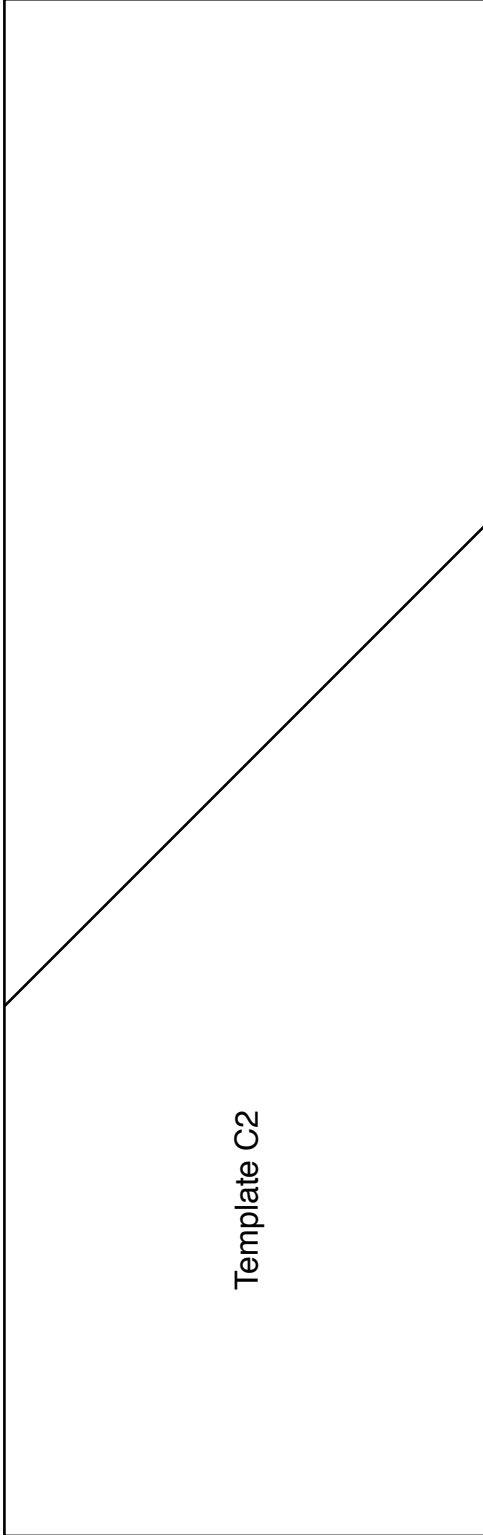
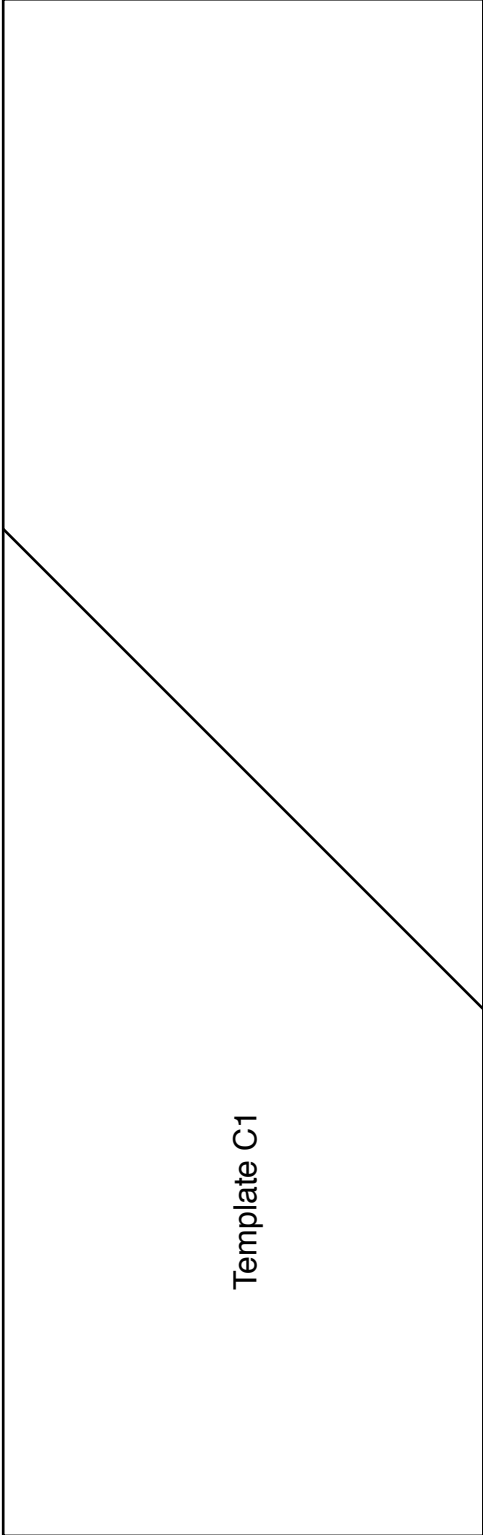
Templates must be printed at 100% or “no scaling”. To ensure the templates are the correct size, measure the guide line to make sure it has printed at the correct length.



Templates must be printed at 100% or “no scaling”. To ensure the templates are the correct size, measure the guide line to make sure it has printed at the correct length.



Templates must be printed at 100% or "no scaling". To ensure the templates are the correct size, measure the guide line to make sure it has printed at the correct length.





1862/Q Exotic Flower



1862/S Exotic Flower



1868/S Flower Trail



2014/S Mini Leaf



2014/P Mini Leaf



1868/Q Flower Trail



2010/P Vine



2008/S Meadow



2008/P Meadow



2010/S Vine



2007/S Floral Scroll



2011/P Foulard



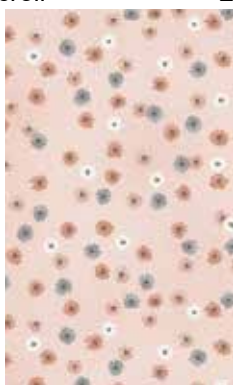
2011/Q Foulard



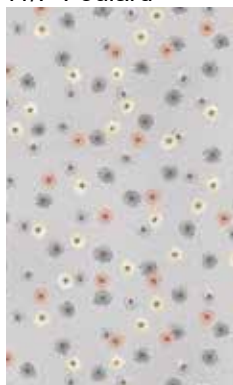
2007/Q Floral Scroll



2009/Q Blossom



2009/P Blossom



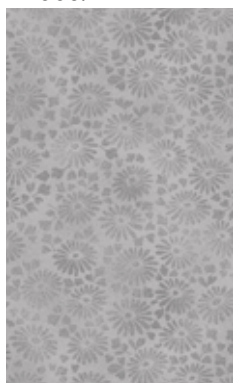
2009/S Blossom



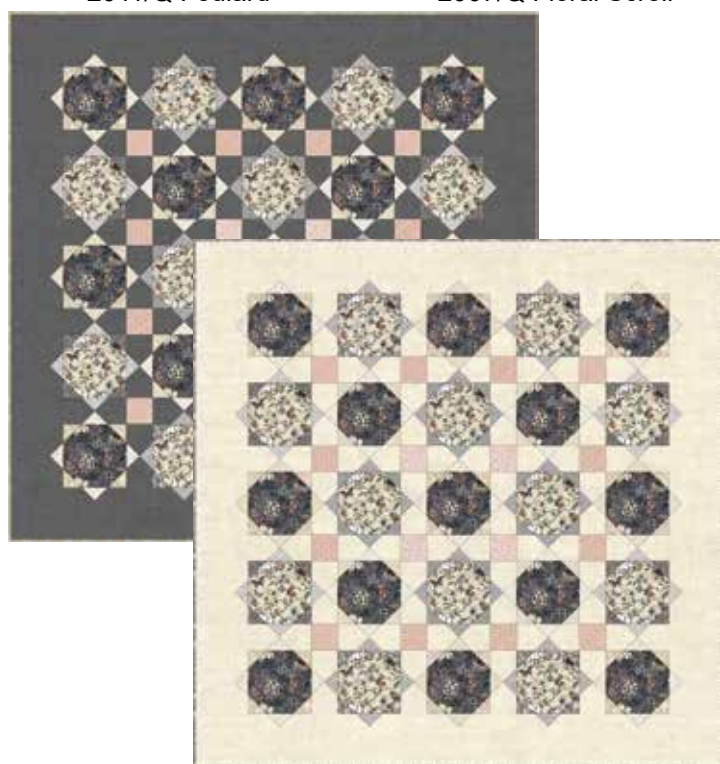
2013/Q Daisy



2013/P Daisy



2013/S Daisy



Finished size 60" x 60" (1.5 m x 1.5m)

Designed by Lynne Goldsworthy of lilysquilts.blogspot.com
Download free instructions from www.makoweruk.com