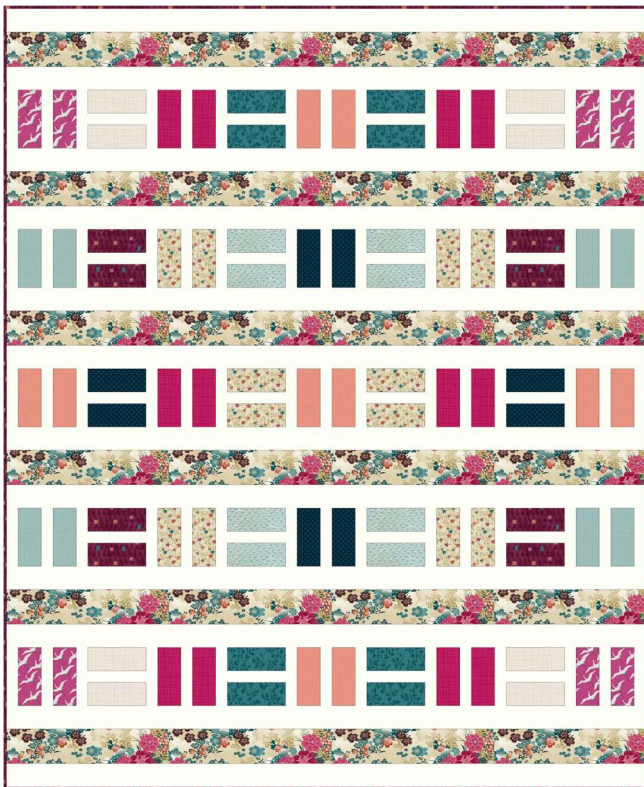




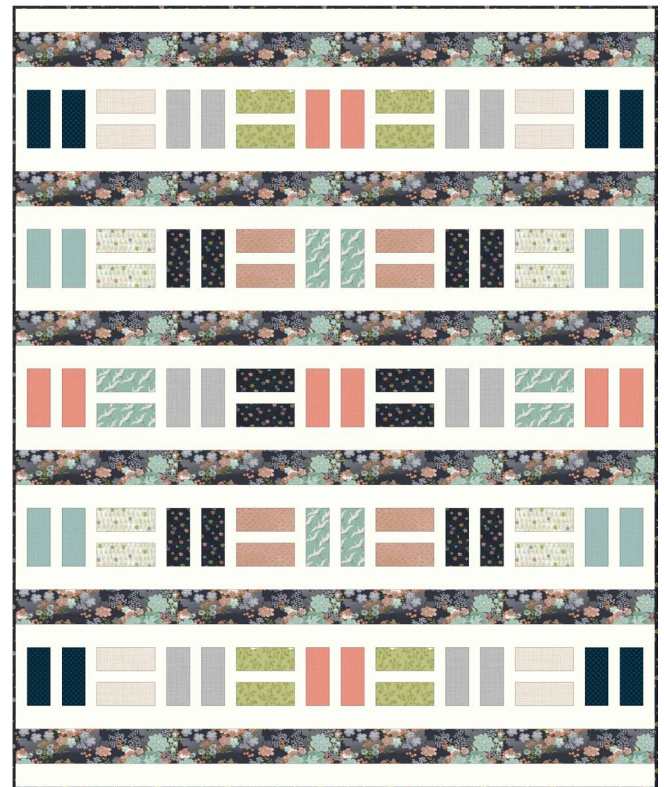
Asami Quilt

Finished size 55" x 67" (1.40 x 1.70m)

Designed by Lynne Goldsworthy of lilysquilts.blogspot.com
 using the Asami collection from Makower Uk www.makoweruk.com



Asami Fuschia Quilt A



Asami Grey Quilt B

makower uk
The Henley Studio

118 Greys Road, Henley-on-Thames, Oxon RG9 1QW.
 Tel: +44(0)1491 579727
 e-mail info@makoweruk.com www.makoweruk.com

a andover



FABRIC REQUIREMENTS:

Quilt A Fushia	Quilt B Grey	Description	Amount	
1558Q	1558S	Large Flower	75cm / 30"	Eight 3 ½" WOF strips. Sew end to end then cut six 55 ½" lengths
1559P**	1559T**	Cranes	Fat eighth	Eight 2 ½" x 5 ½" rectangles
1560B	1560G	Bamboo	Fat eighth	Eight 2 ½" x 5 ½" rectangles
1561P*	1561Q	Text	Fat eighth	Eight 2 ½" x 5 ½" rectangles
1562Q	1562B*	Small Flower	Fat quarter	Twelve 2 ½" x 5 ½" rectangles
1563B	1563P	Fans	Fat eighth	Eight 2 ½" x 5 ½" rectangles
1564B	1564V	Mini Squares	Fat eighth	Eight 2 ½" x 5 ½" rectangles
1525Q	1525Q	Cream Linea	Fat eighth	Eight 2 ½" x 5 ½" rectangles
1525 B2	1525 B2	Blue Linea	Fat eighth	Eight 2 ½" x 5 ½" rectangles
1525 P4	1525 P4	Pink Linea	Fat quarter	Ten 2 ½" x 5 ½" rectangles
1525 P8	1525 S3	Fuchsia / Grey Linea	Fat quarter	Twelve 2 ½" x 5 ½" rectangles
1561P	1562B	Binding	40cm / ½ yd	Six 2 ½" WOF strips
1559P	1559T	Backing	4 m / 4 ¼ yds	Cut into two equal lengths
2000 Q01	2000 Q01	Spectrum	1.6 m / 1 ¾ yds	Sixteen 2 ½" WOF strips. Sew end to end and cut twelve 55 ½" lengths. Fourteen 1 ½" WOF strips. Cut into ninety-five 5 ½" lengths
Wadding			1.6 x 1.9m / 63" x 75"	
* also used for backing				
** also used for binding				

Notes

- Press fabrics before cutting
- Seams are ¼" throughout unless stated otherwise
- Press seams away from the print fabrics after each step
- WOF = width of fabric, indicating a strip of fabric cut fro selvedge to selvedge

Making the quilt top

1. Cut the print fabrics as set out in the Fabric Requirements Schedule.
2. Sash all the print $2\frac{1}{2}$ " x $5\frac{1}{2}$ " rectangles into pairs using cream $1\frac{1}{2}$ " x $5\frac{1}{2}$ " strips in between.
3. Sash the pieces made at 2 above into five rows of nine with eight cream $1\frac{1}{2}$ " x $5\frac{1}{2}$ " strips in between following the layout in the main quilt image and taking care to rotate the blocks as shown in that image.
4. Sew one cream $2\frac{1}{2}$ " x $55\frac{1}{2}$ " strip to the top and bottom of each of the rows made at 3.
5. Sash the pieces made at 4 together using the large flower $3\frac{1}{2}$ " x $55\frac{1}{2}$ " strips.
6. Sew two cream $2\frac{1}{2}$ " x $55\frac{1}{2}$ " strips to the top and bottom of the quilt top to finish.

Finishing the quilt

1. Sew the two pieces of backing fabric together along the long sides using a $\frac{1}{2}$ " seam. Press that seam open.
2. Sew the binding strips end to end using diagonal or straight seams as preferred and press wrong sides together along the length to make a double fold binding.
3. Make a quilt sandwich, basting together the quilt back, the wadding and the quilt top.
4. Quilt as desired then trim the quilt square, removing excess wadding and backing.
6. Bind the quilt taking care to mitre the corners.



1558/Q LARGE FLOWER



1558/S LARGE FLOWER



1559/P CRANES



1560/B BAMBOO



1560/G BAMBOO



1559/T CRANES



1561/P TEXT



1562/Q SMALL FLOWER



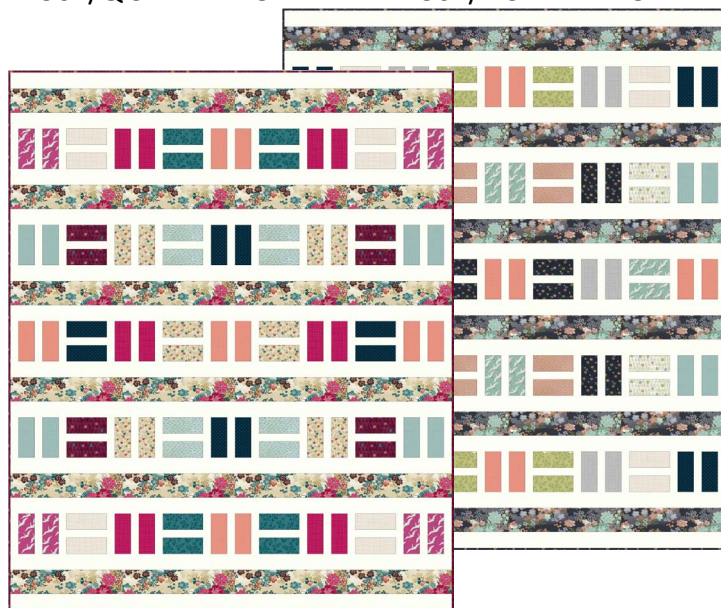
1562/B SMALL FLOWER



1561/Q TEXT



1563/B FANS



Asami Quilts

by Lynne Goldsworthy of lilysquilts.blogspot.com

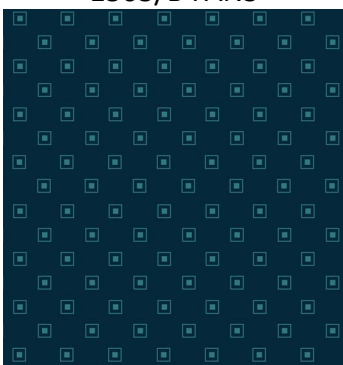
Finished size 1.40 x 1.70m (55" x 67")

available to download free from www.makoweruk.com

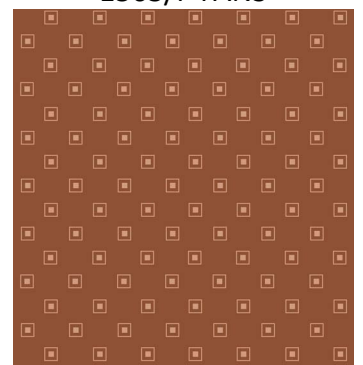
ALL DESIGNS 50% OF ACTUAL SIZE



1563/P FANS



1564/B MINI SQUARE



1564/V MINI SQUARE